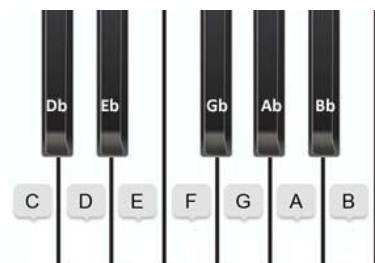


LESSON 25

THE ACCIDENTALS (FLAT SIGN *b*)



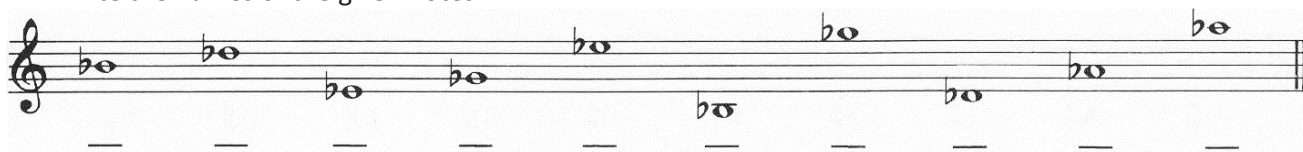
In music, an accidental is a symbol of a pitch that is not a member of the scale indicated by the most recently applied key signature.

A flat among other symbols marks such notes. It lowers the note before which it is placed by a half tone step. It is therefore the next low (left) key on the keyboard to play (black or white).

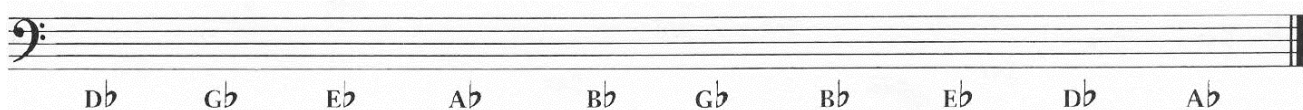
- To draw a flat sign, draw a vertical line, then add a curve with a pointed end. Draw 5 Bbs.



- Write the names of the given notes.



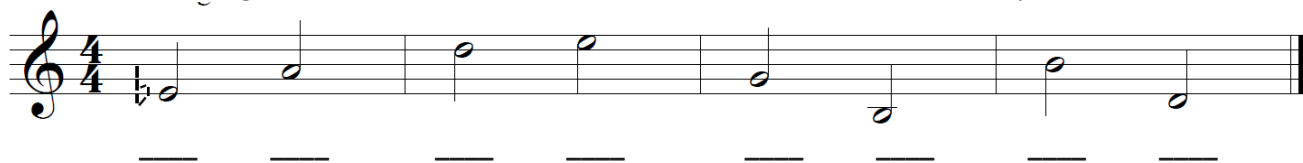
- Write the given notes.



- Draw the brace (Accolade), the treble and the bass clef, write the note names then draw the bar lines and complete the staff with a double bar line.



- Write the flat sign in front of each note and write the names of the notes in the spaces below.



- Write the flat sign in front of each note and write the names of the notes in the spaces below.

