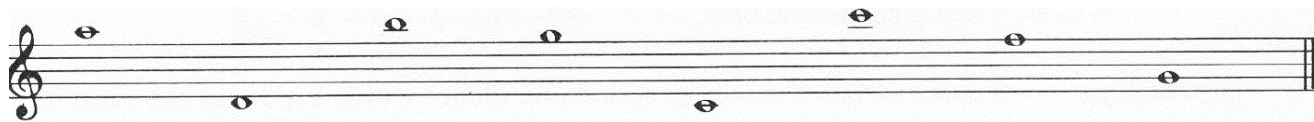


LESSON 12

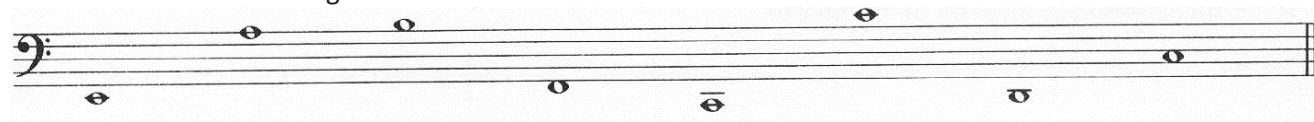
REVIEW OF LESSON 9-11

1. The treble clef and bass clef can be connected by a curly line named *brace/accolade*.
2. When treble clef and bass clef are combined, they form the *grand staff*.
3. *Ledger* lines are added above or below the five-line staff.
4. The duration of musical silence is indicated by various types of *rests*.
5. A whole rest is equivalent to two *half* rests.
6. Two half rests are equivalent to *one* whole rest.
7. Four quarter rests are equivalent to *two* half rests.
8. Two Quarter rests are equivalent to one *half* rest.
9. Name the following notes in the treble clef.



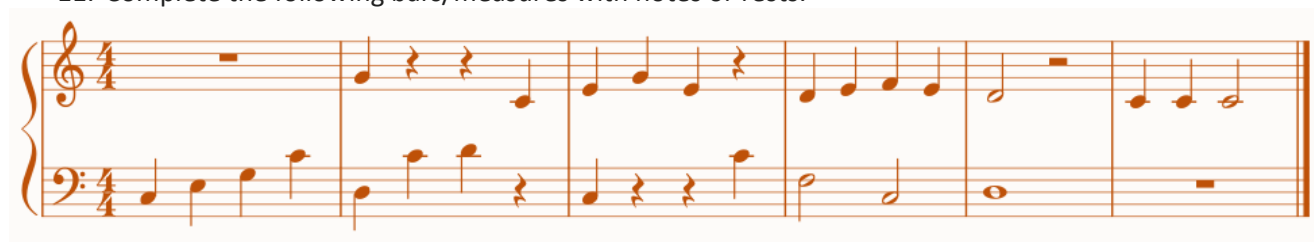
A D B G C C F G

10. Name the following notes in the bass clef.



E A B F C C D C

11. Complete the following bars/measures with notes or rests.



12. Draw the missing bar lines.



13. Complete the following bars/measures with notes or rests.

