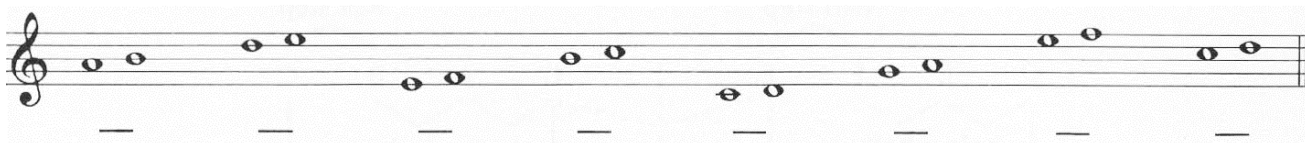


LESSON 32

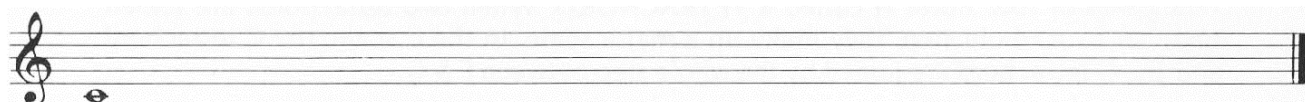
REVIEW OF LESSON 29-31

1. A special scale is the so-called _____ scale.
2. All _____ and _____ keys on a piano keyboard are played in succession, up (_____) or back again (_____).
3. In general, when going up a _____ sign, and when going down a _____ sign should be used.
4. If you play the chromatic scale up and down, the black keys will have _____ names.
5. Same tones with different names are called _____ tones.
6. In a chromatic scale, each note is a _____ tone step apart.
7. The major scale consists of ____ successive tones
8. The formula of whole and half steps for a major scale is:

9. Determine if the interval between each note group is a half tone step (HT) or a whole tone step (WT).



10. Write an ascending chromatic scale starting with the note C.



11. Write a descending chromatic scale starting with the note C.



12. Write a C-major scale in the following two octaves. The first and the last note in each octave are given.

