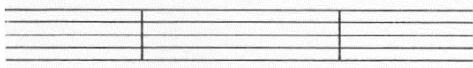
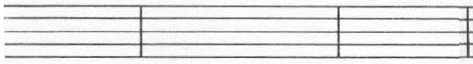


LESSON 6

BARS – BAR LINES – DOUBLE BAR LINES

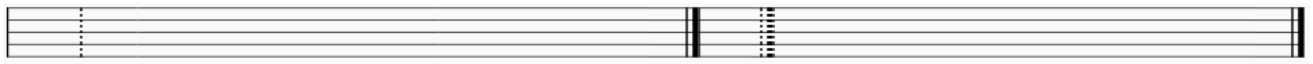


Music is divided into equal parts, called **bars or measures**. **Bar lines** indicate the beginning and end of a bar. The distance between two bar lines is called the bar or measure.

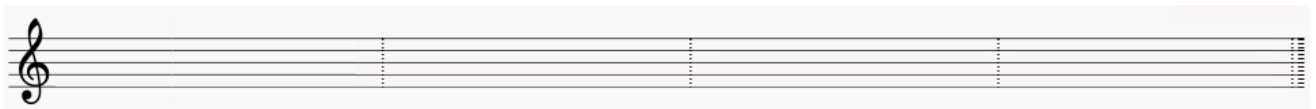


A **double bar line** consisting of a thin and a thick line indicates the end of a musical piece.

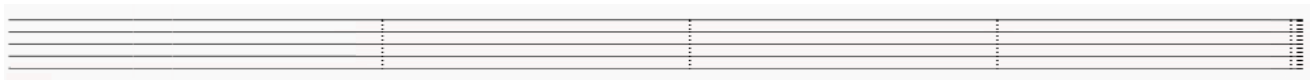
1. Draw four single and four double bar lines on the staff below.



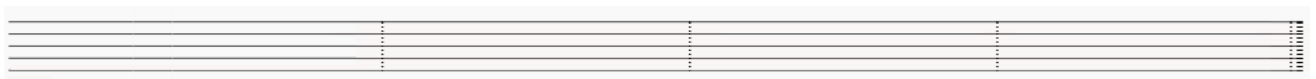
2. Divide the staff into four bars and complete it with a double bar line.



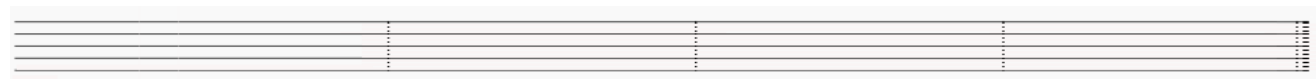
3. Draw the treble clef, divide the staff into four bars, add a whole note of your choice in each bar, name the notes, and complete the staff with a double bar line.



4. Draw the bass clef, divide the staff into four bars, add two half notes in each bar, name the notes, and complete the staff with a double bar line.



5. Draw the treble clef, divide the staff into four bars, add four quarter notes in each bar, name the notes, and complete the staff with a double bar line.



6. The following song notation is missing the bar lines. Draw the bar lines in the right place:

Twinkle, twin-kle, lit - tle star, how I won-der what you are!