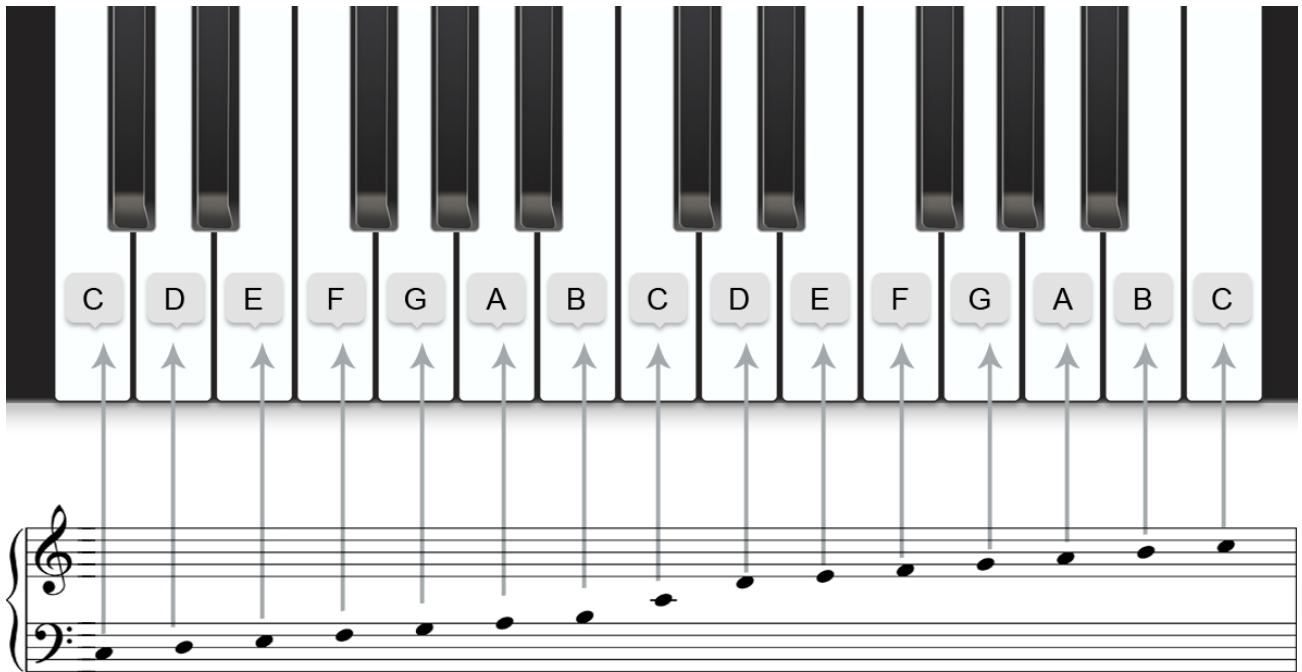


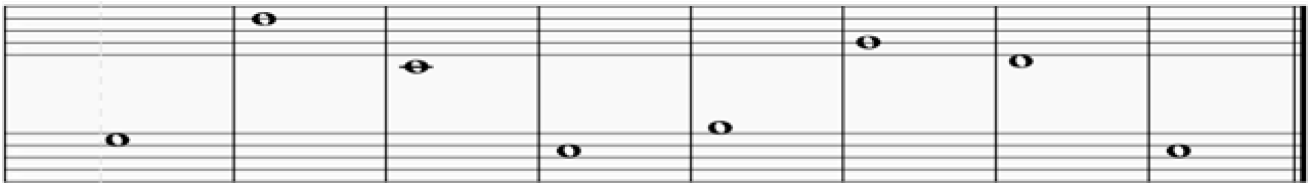
## LESSON 9

### THE GRAND STAFF

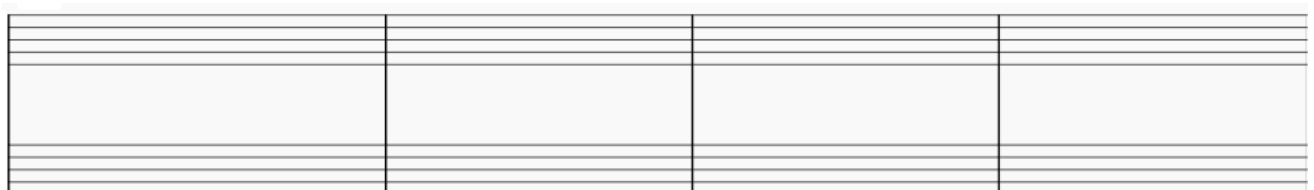
The piano is usually played simultaneously with the right hand in the high and the left hand in the low ranges. The notes are recorded in a system that combines one line in the violin and a second line in the bass clef. The two lines are connected by a curly bracket (Accolade). The middle C of the piano is written between the two lines. From there you can write the sounds mirror image to the outside.



1. Draw the brace (accolade), the treble clef, the bass clef, name the displayed notes and add the time signature.



2. Draw the brace (accolade), the treble clef, the bass clef and draw the specified notes. Use half notes on both staves. Finish the line with a double-bar line.



C      D      E      F      G      B      F      E