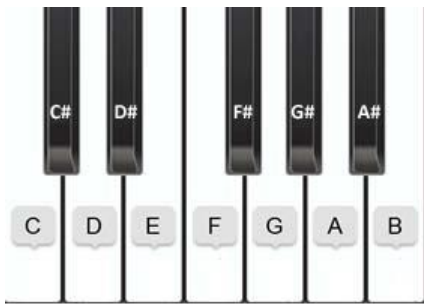


## LESSON 26

### THE ACCIDENTALS (SHARP SIGN #)



In music, an accidental is a symbol of a pitch that is not a member of the scale indicated by the most recently applied key signature.

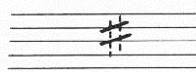
A sharp sign # among other symbols mark such notes. It raises the note in front of which it stands by half a tone step; that is, the next higher (right) key must be played (black or white).

If an accidental (# or b) is placed in front of a note, it will be valid for all subsequent notes until the next bar line. A bar line cancels an accidental.

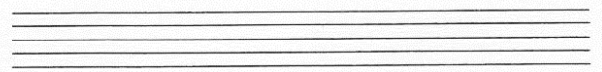
1. Draw two vertical lines.



- Then draw two slashes.



- Draw 5 Sharps.



2. Draw the given notes.



3. Write the names of the the given notes.



4. Draw the brace (Accolade), the treble and the bass clef, write the note names then draw the bar lines and complete the staff with a double bar line.

