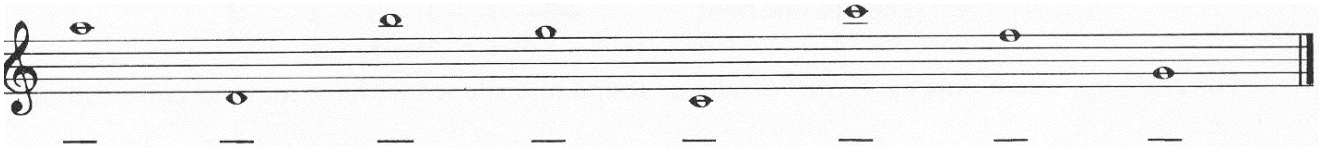


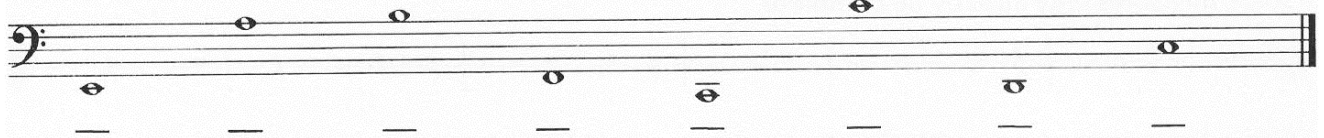
LESSON 12

REVIEW OF LESSON 9-11

1. The treble clef and bass clef can be connected by a curly line named _____.
2. When treble clef and bass clef are combined, they form the _____.
3. _____ - lines are added above or below the five-line staff.
4. The duration of musical silence is indicated by various types of _____.
5. A whole rest is equivalent to two _____ rests.
6. Two half rests are equivalent to _____ whole rest.
7. Four quarter rests are equivalent to _____ half rests.
8. Two Quarter rests are equivalent to one _____ rest.
9. Name the following notes in the treble clef.



10. Name the following notes in the bass clef.



11. Complete the following bars/measures with notes or rests.

12. Draw the missing bar lines.

13. Complete the following bars/measures with notes or rests.