

## LESSON 55

### MELODIC MINOR SCALES



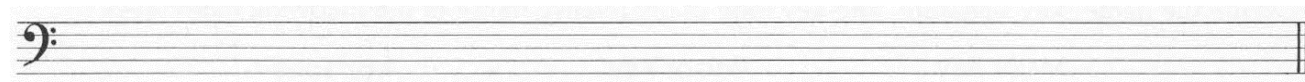
Unfortunately, there is now this  $1\frac{1}{2}$  tone step in the harmonic minor scale that disturbs the melodic lines in this area of the scale. If you want to have both, a lead tone and a smooth melodic line in a minor composition, you also need to raise the sixth scale tone to compensate for the unpopular  $1\frac{1}{2}$  tone step. Like the natural minor scale, the melodic minor scale must be led downwards, because otherwise, it would sound too similar to the major key with the same root note.

#### A-Minor melodic

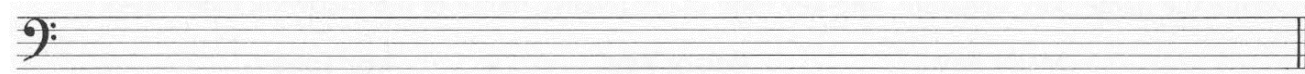
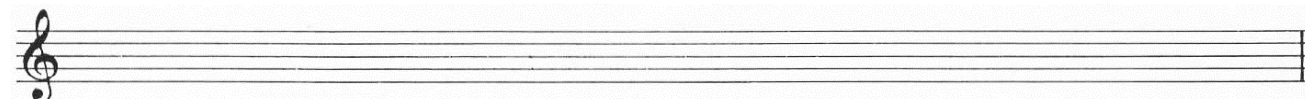


First determine the key of the parallel major key and then write the corresponding natural minor scale ascending and descending in the below staves. Now raise the sixth and the seventh tone by half a tone step and lower it again when descending. The result will be a melodic minor scale.

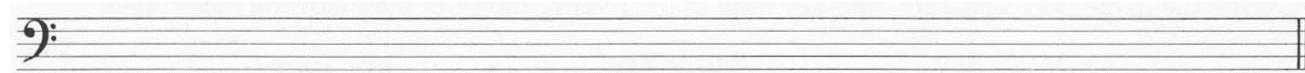
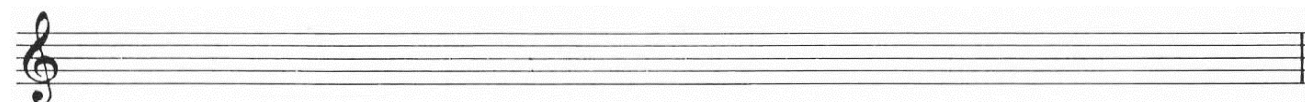
#### D-Minor melodic



#### E-Minor melodic



#### G-Minor melodic



#### C-Minor melodic

